





# Helpful Hints

**VERY IMPORTANT—GAUGE** is the most important element in knitting and crocheting. If your gauge is correct, the finished garment will be the size indicated in the directions. If necessary, change to larger or smaller needles to maintain the correct stitch and row gauge. The important thing to remember is that the size of the needle does not matter as long as you maintain the stitch and row gauge quoted for the specific item you are making.

## WASHING DIRECTIONS:

1. Wash in lukewarm water, never hot water, using a mild detergent.
2. Rinse thoroughly, removing all the detergent.
3. In last rinsing water use 2 tablespoons of vinegar to 2 or 3 gallons of water.
4. Remove excess water, placing Turkish towels above and below sweater, and between layers of front, back and sleeves. Roll and squeeze. Repeat if necessary.

**NOTE:** Never use an automatic dryer, except for Spinnerin Orlon Sayelle Express.

5. Never permit a sweater to lie around wet or even damp . . . quick-drying is important.
6. Place on dry Turkish towel to dry, blocking to proper size.

**NOTE:** Never dry in sun. NEVER PRESS

**BLOCKING:** For sweaters, especially for all textured yarns, use this method: Immerse 2 terry beach towels in warm water. Wring out towels. Place 1 towel on floor or blocking board. Place sweater or dress on towel. Pat to size. Cover sweater or dress with second towel. Steam top towel if desired. DO NOT PRESS.

## How To Launder a Spinnerin "Orlon Sayelle" Garment Using a Washer-Dryer Combination:

Turn sweater inside out. Place in lingerie bag or pillow case. Set washer-dryer for 5 minute cycle or delicate fabric setting; high water level; medium to high drying temperature. Use any commercial detergent. Remove garment when it is completely dry. Dry at least 40 minutes.

## How To Hand-Wash a Spinnerin "Orlon Sayelle" Garment:

1. Trace outline of garment on heavy paper and cut out.
2. Hand-wash in lukewarm water, using a light-hand scrubbing and any commercial detergent. Rinse in cold water.
3. "Squeeze". Do not wring.
4. Rinse again, using a softener.
5. Using terry towels, remove excess water. Repeat.
6. Slightly "bunch" garment on flat surface, not terry towels. Check size with paper cut-out. Let dry thoroughly.

## ABBREVIATIONS

K .....	knit	inc .....	increase	psso .....	pass slip st over K st
P .....	purl	dec .....	decrease	ch .....	chain
st(s) .....	stitch(es)	y o .....	yarn over	s c .....	single crochet
beg .....	beginning	d p .....	double point	d c .....	double crochet
tog .....	together	sl .....	slip	tr or tc .....	treble crochet
rnd(s) .....	round(s)	lp(s) .....	loop(s)	sp(s) .....	space(s)
		hdc .....	half double crochet		

\* Asterisk means repeat instructions following the asterisk, as many more times as specified in addition to the first time.

## FOR FRENCH CANADIANS

K .....	tricoter à l'endroit	beg .....	commencement	d p .....	aiguille a deux bouts
P .....	tricoter à l'envers	y o .....	prenez la maille par dessus l'aiguille	ch .....	chaîne
inc .....	augmenter	sl st .....	glissez 1 maille	s c .....	simple crochet
dec .....	diminuer	psso .....	prenez la maille glissée par dessus	st .....	maille
tog .....	ensemble			sts .....	mailles

## EQUIVALENT AMERICAN AND BRITISH NEEDLE SIZES

American .....	0	1	2	3	4	5	6	7	8	9	10	10½	11	13	15
British .....	13	12	11	10	9	8	7	6	5	4	3	2	1	00	000



These directions are written for size 10. Changes for sizes 12, 14, 16 and 18 are in parentheses.

**MATERIALS**

SPINNERIN Alpine or Ascot (50 gram balls) 9(9-10-10-11) balls Color A and 3(3-3-3-4) balls Color B

OR SPINNERIN Marvel Twist or Nylaine Germantown Knitting Worsted (4 oz. skeins) 3(3-3-4-4) skeins Color A and 2(2-3-3-3) skeins Color B

OR SPINNERIN Caresse or Highlaine (1 oz. skeins) 7(7-8-8-9) skeins Color A and 3(3-3-3-4) skeins Color B

OR SPINNERIN Orlon Sayelle Express or Wintuk (2 oz. balls) 6(7-8-8-9) balls Color A and 3(3-3-3-4) balls Color B

AND SPINNERIN Mohair 1001 or Cortina (1 oz. balls) 4(4-5-5-5) balls Color C

1 pair each knitting needles Nos. 6 and 8

1 set d p needles No. 6; 1 steel crochet hook No. 0

**GAUGE:** 5 sts = 1 inch      6 rows = 1 inch

**BODY MEASUREMENT:** At bustline 31(32-34-36-38) inches.

**SWEATER MEASUREMENT:** At bustline 33(34-36-38-40) inches.

**NOTE:** Sweater and Scarf are worked in striped pat. Argyle pattern is embroidered in duplicate st over sl sts (2 rows) of pat when pieces of Sweater and Scarf are completed.

**PATTERN STITCH**—Multiple of 2 sts plus 1.

*Row 1* (right side): K 1 st, with yarn at *back* sl 1 as if to P.

*Row 2:* Purl.

Repeat these 2 rows for pat st.

**STRIPED PATTERN**—Cast on with Color A. Work in pat st as follows: 26 rows Color A, 2 rows Color C; 26 rows Color A, 6 rows Color B. Repeat these 60 rows for striped pat.

**BACK:** With smaller needles and Color A, cast on 83(85-91-95-101) sts. Rib in K 1, P 1 for 1½ inches. Change to larger needles. Work in striped pat st until piece measures 17 inches from beg, or desired length to underarms.

**ARMHOLES:** Dec 1 st each side every other row 5(5-7-8-10) times. Continue in established pat on 73(75-77-79-81) sts until armholes measure 8(8¼-8½-8¾-9) inches.

**SHOULDERS and NECK:** Bind off 5 sts at beg of next 2 rows. There are 63(65-67-69-71) sts on needle. *Next Row:* Bind off 5 sts, work until there are 18(19-20-21-22) sts on needle, tie in another ball of yarn, bind off center 17 sts, work last 23(24-25-26-27) sts. Continue working on each side with a separate ball of yarn or work 1 side at a time if you wish. *Next Row:* Bind off 5 sts, work to end. There are 18(19-20-21-22) sts on each side. Continue to bind off 5 sts from each armhole edge once more, then 5(6-7-8-9) sts once AND AT THE SAME TIME bind off 4 sts from each side of neck edge twice. There are 20(21-22-23-24) sts bound off for each shoulder.

**FRONT:** Work same as Back until armhole shaping is completed. There are 73(75-77-79-81) sts on needle. Continue in established pat until armholes measure 6½(6¾-7-7¼-7½) inches.

**NECK and SHOULDERS:** Work 31(32-33-34-35) sts, tie in another ball of yarn, bind off center 11 sts, work to end. Continue working on each side with a separate ball of yarn, or work 1 side at a time if you wish. Bind off 3 sts from neck edge every other row twice, 2 sts twice and 1 st once, shaping shoulders as on Back when armholes are same length.

**SLEEVES:** With smaller needles and Color A, cast on 49(51-53-55-57) sts. Rib in K 1, P 1 for 2 inches. Change to larger needles. Begin with Row 31 of pat st . . . See chart on page 46. Work in striped pat st, inc 1 st each side every 1½ inches 5 times, every ¾ inch 7 times. Continue established pat on 73(75-77-79-81) sts until piece measures 19 inches from beg, or desired length to underarms. *CAP:* Dec 1 st each side every other row 5(6-7-8-9) times. Bind off remaining sts.

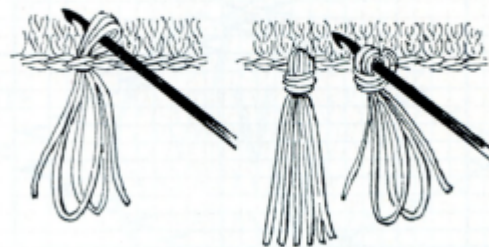
**SCARF:** With larger needles and Color A, cast on 41 sts. Work in striped pat st for 264 rows. Piece should measure about 42 inches. Bind off in pat.

**FINISHING:** Block each piece to measurements. Embroider pieces in duplicate st working over sl sts. First mark center st of each piece. Beg at center work to right edge, then work to left edge following Chart 1 on page 47 for Back and Front, Chart 2 on page 46 for Sleeves and Chart 1 on page 47 for Scarf. Sew underarm, shoulder and sleeve seams. Sew in Sleeves. See page 46 for duplicate stitch.

**NECKBAND:** With d p needles using Color A and working from right side, pick up and K 106(106-110-110-114) sts around neck edge. Mark 1 st at each side at shoulder seam. Join and work around in rib of K 1, P 1, dec 1 st each side of marked st every 3rd rnd until band measures 2¼ inches.

**HEM:** Continue in rib, inc 1 st each side every 3rd rnd until hem measures 2¼ inches. Bind off loosely in ribbing.

**FRINGE:** Cut strands of Color A 6 inches long. Fold in half, then knot 2 strands in every sl st as shown in photograph. Trim fringe evenly to desired length. With Color A and working from right side, work 1 row s c on side edges of Scarf. Steam edges. See illustration below.



To Make Fringe.



Highly Fashionable (Continued from page 48)

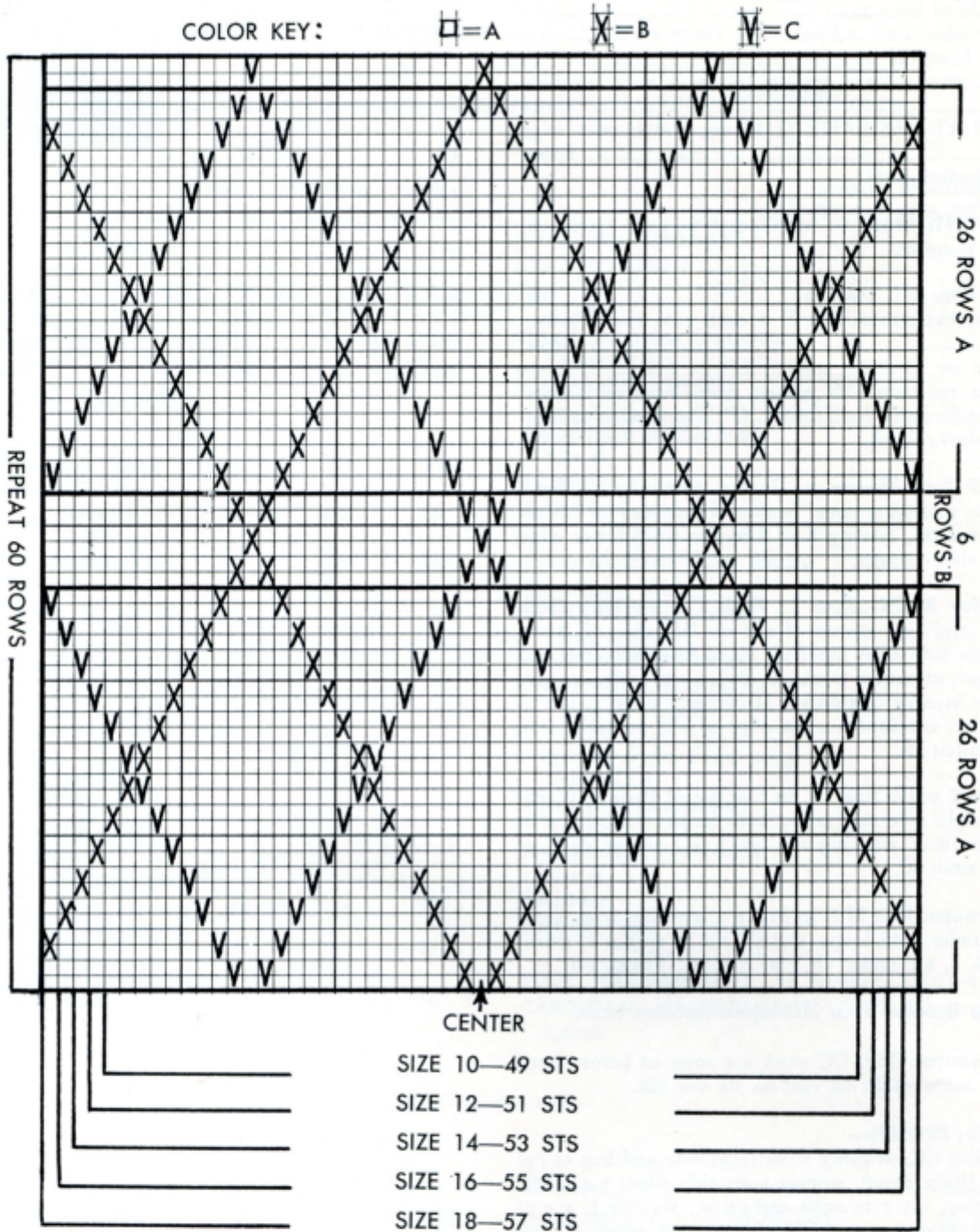


CHART 2 — FOR SLEEVES



DOUBLE DUPLICATE STITCH





COLOR KEY: □=A    X=B    V=C

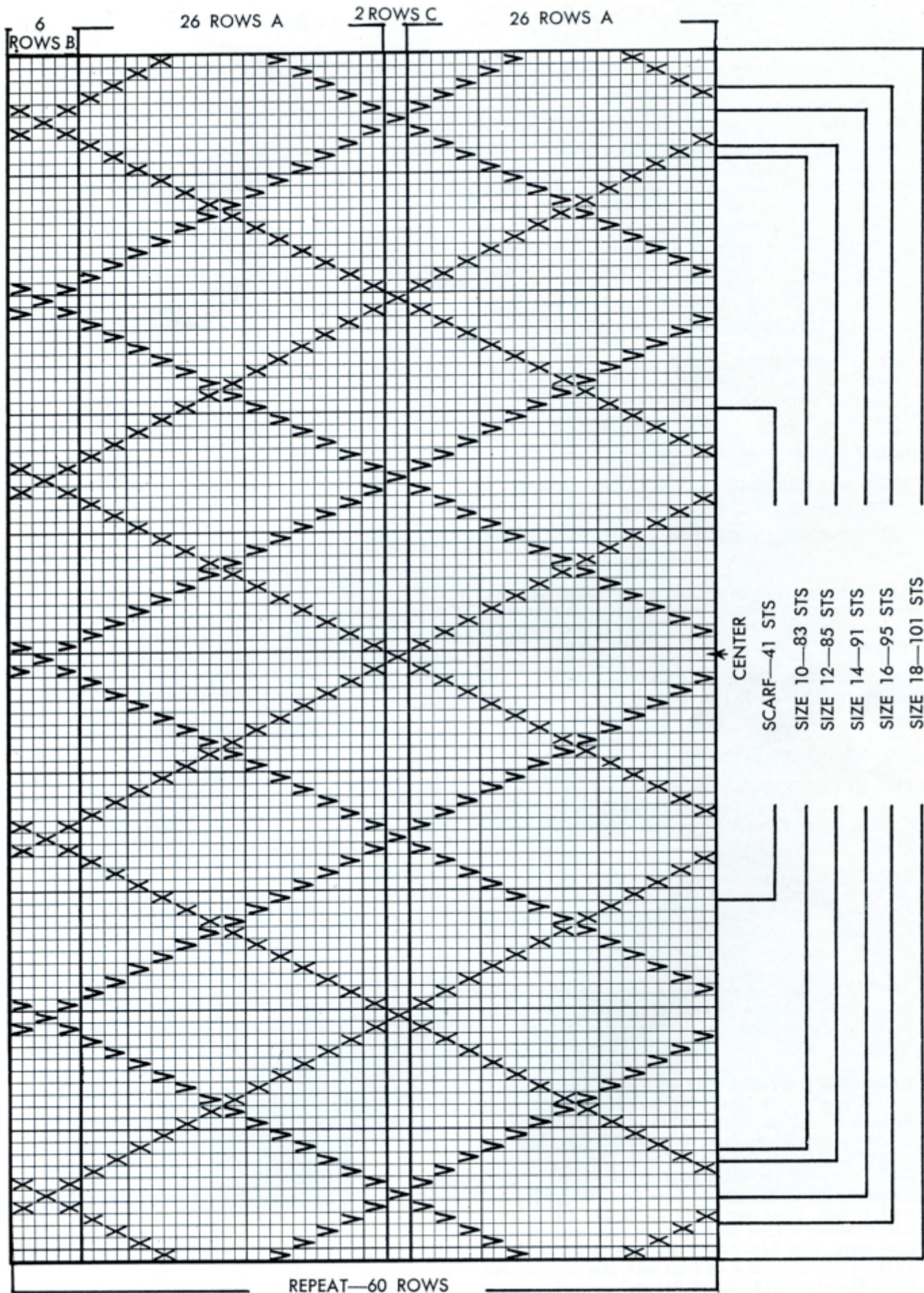


CHART 1 — BACK AND FRONT